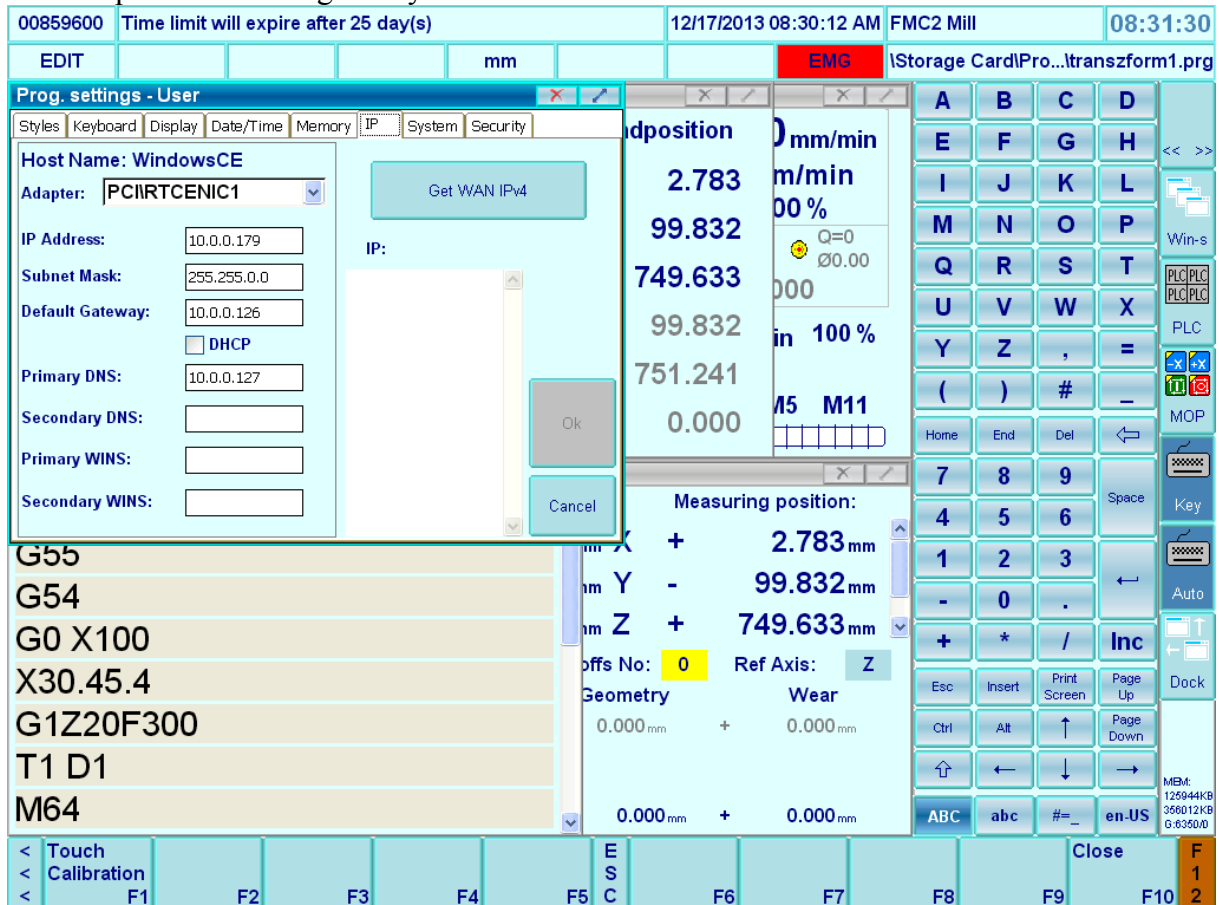


Network settings for Windows CE

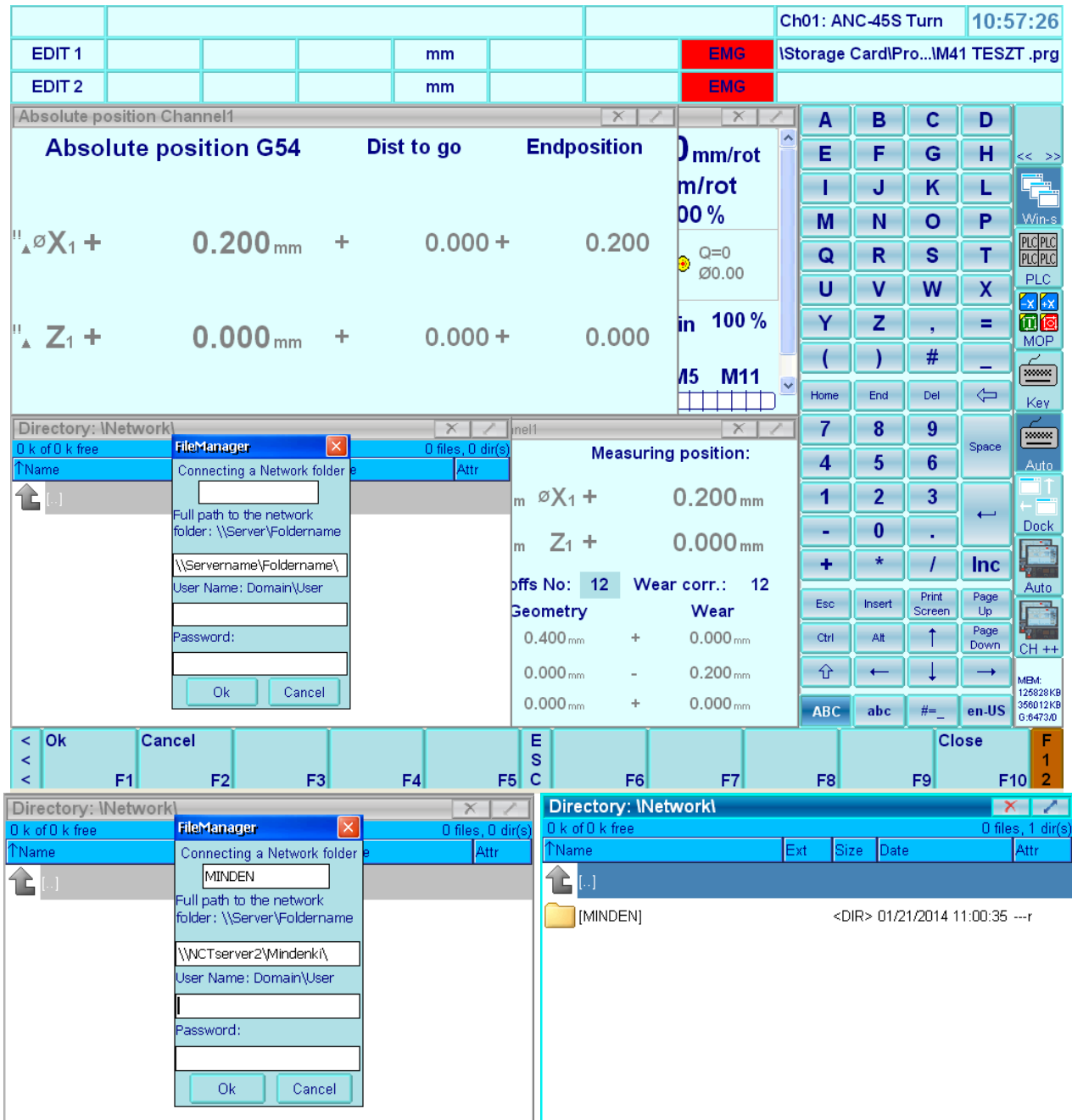
Set the specified IP and gateway address.



After you change this setting, you need to restart the controller. (Switch off and on the machine, not enough to restart the software only)

Reach a network folder from WinCE:

Open the Program->Directory window. Go back to the main directory (press [...] in every folder, while you wont see more [...]). Choose the „Network” folder. Press the File->New Folder from the menu. Set the network folder parameters (Name, path, and user-password if needed). Press “Ok” button and if the parameters correct the directory will be visible.

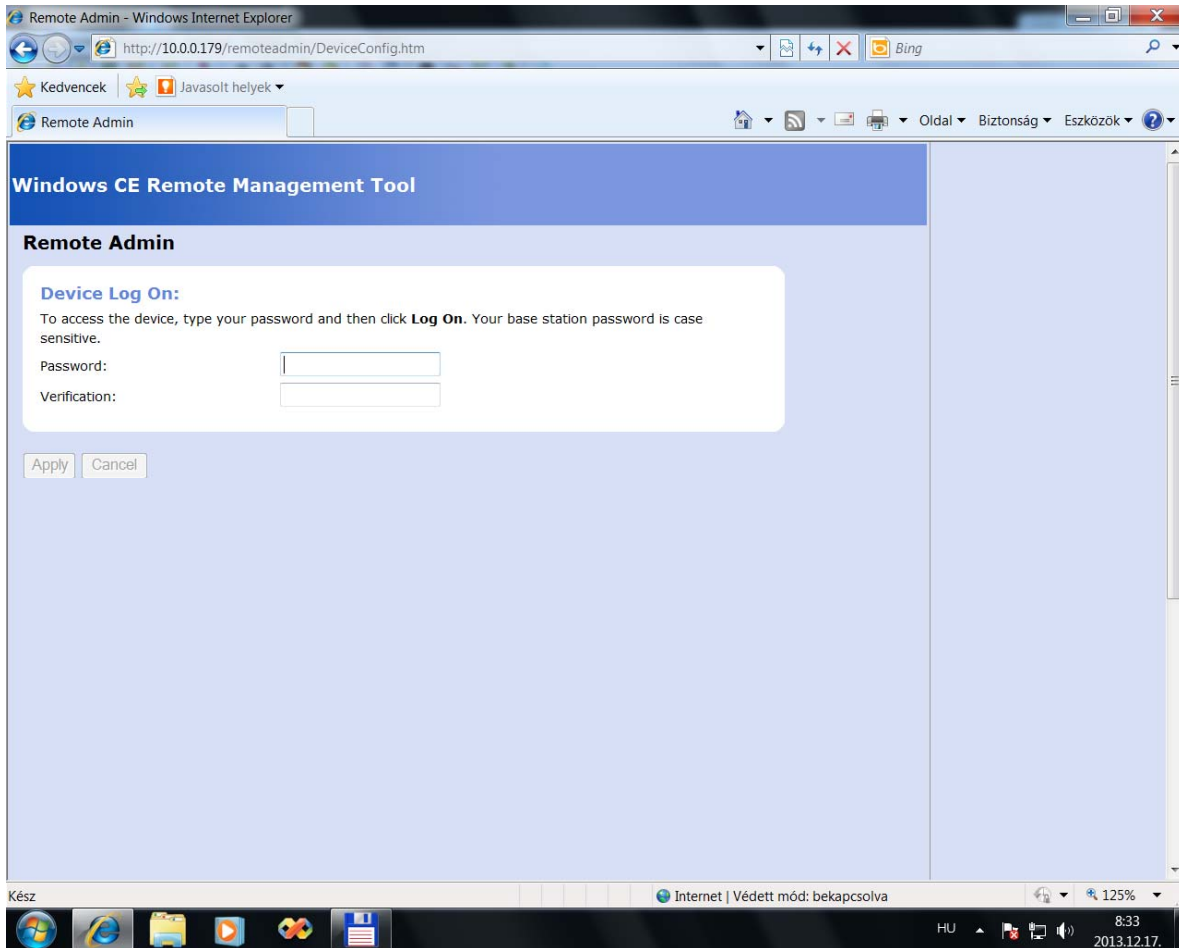


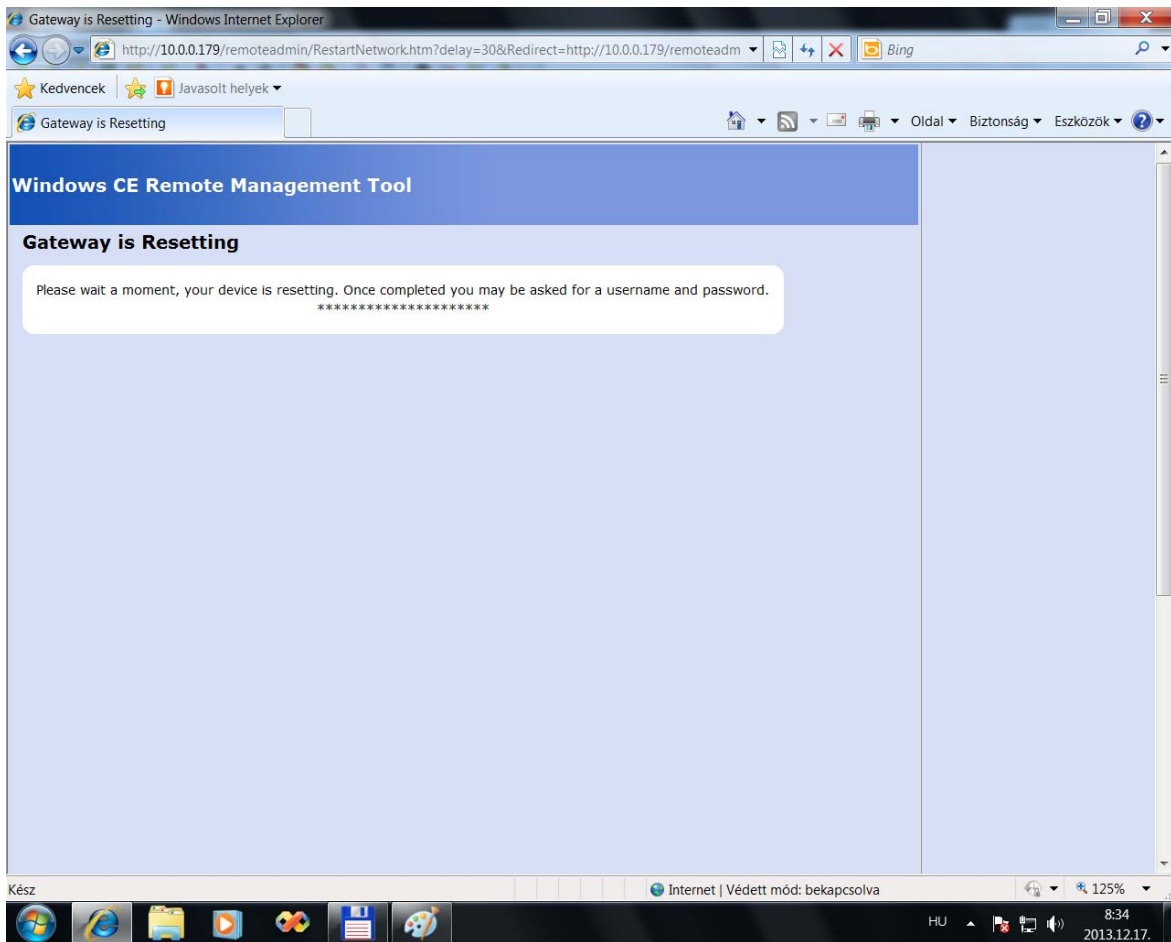
Share a directory in CE:

Start a browser on your PC, and write the ip address (what you have given to your NC controller before) in the address bar. (For example: 10.0.0.179 – and press Enter). At the first run this window appears, and need to set the username and the password.

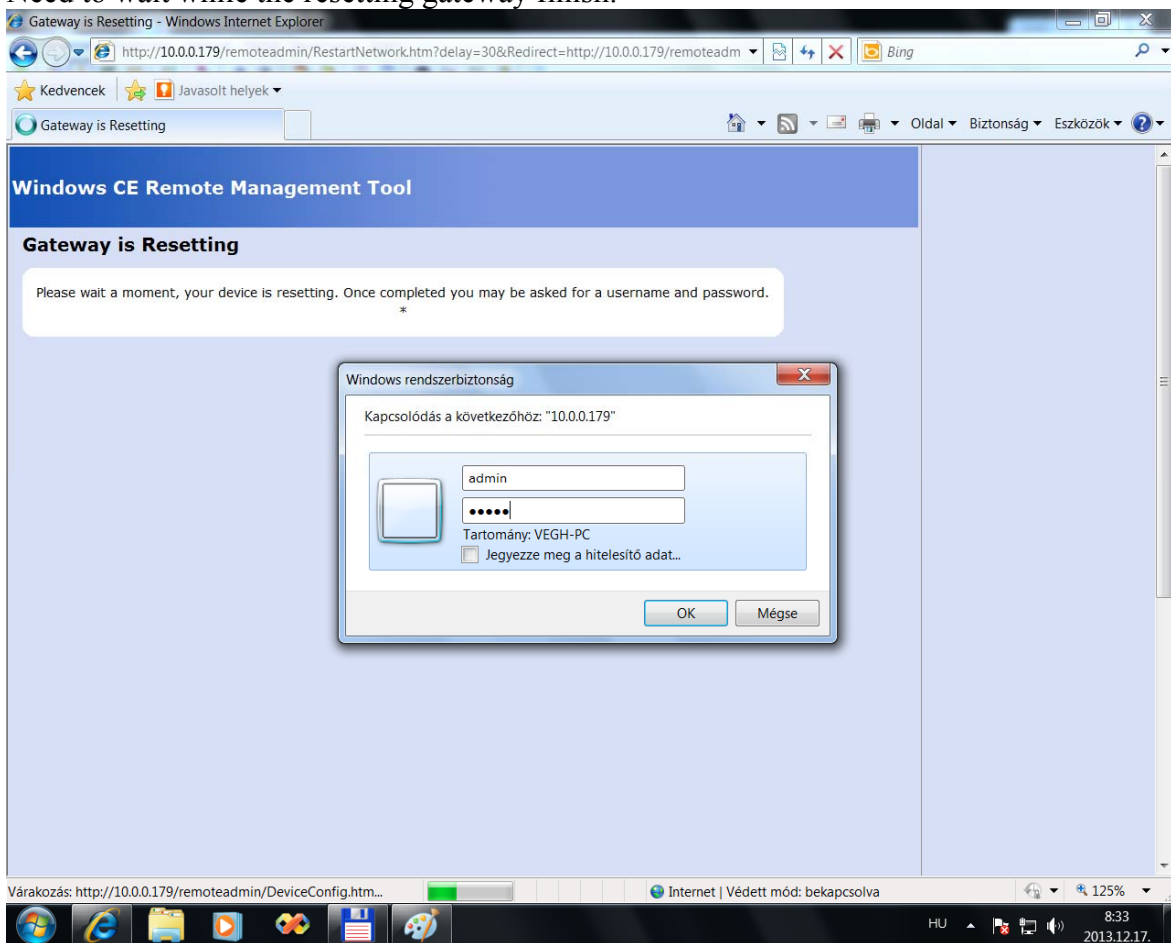
User name: admin

Password: admin

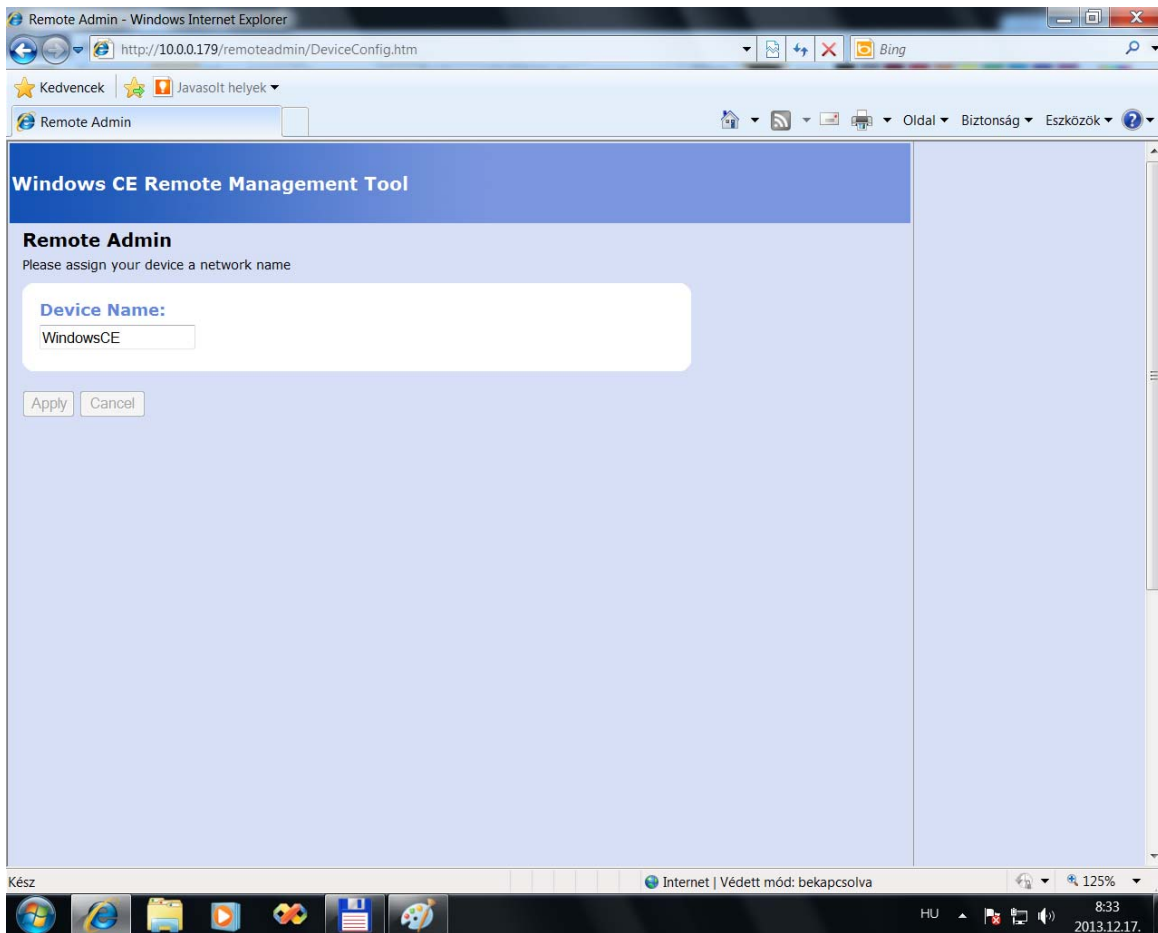




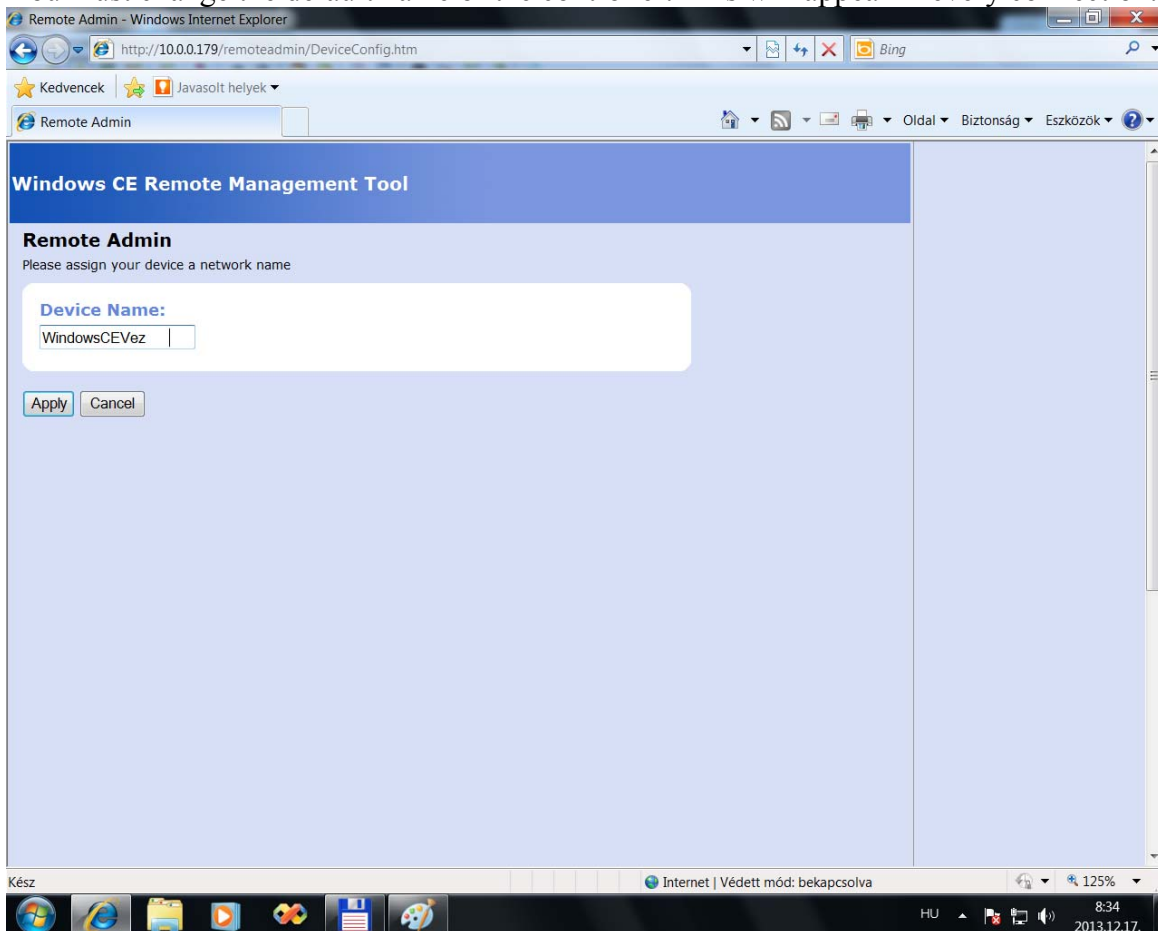
Need to wait while the resetting gateway finish.



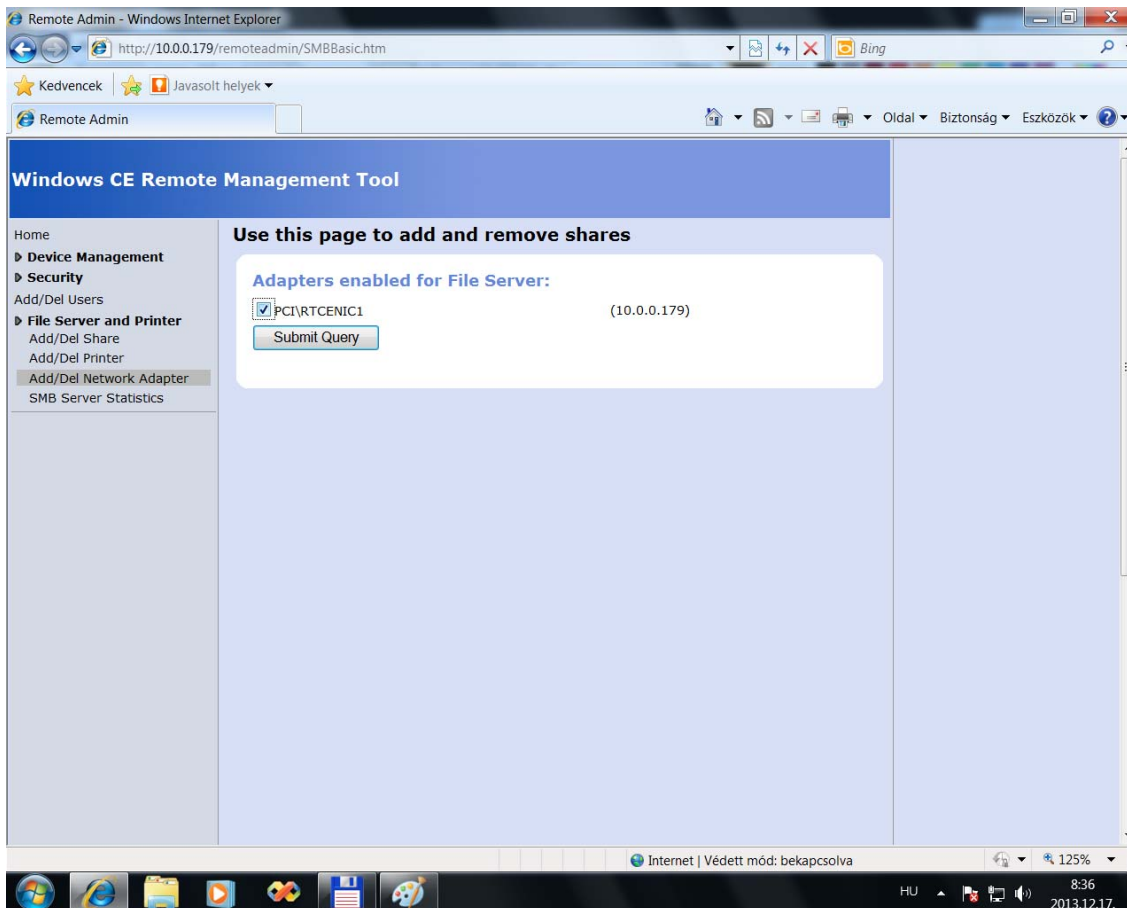
Then you need to write the given username and password.



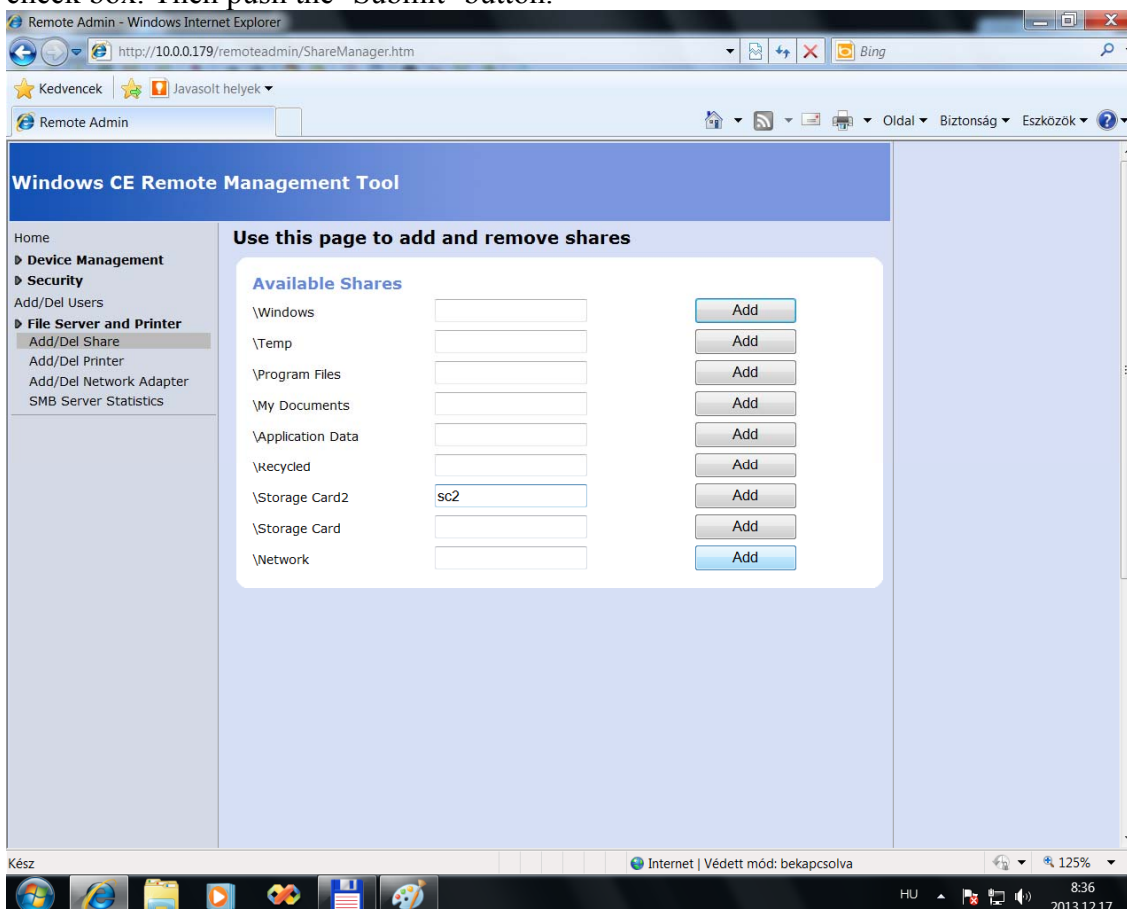
You must change the default name of the controller. This will appear in every connection.



Change this name and push the „Apply” button.



You need to enable the adapter in the 'Add/Del Network adapter' menu. Check the PCI\RTCRNIC1 check box. Then push the 'Submit' button.

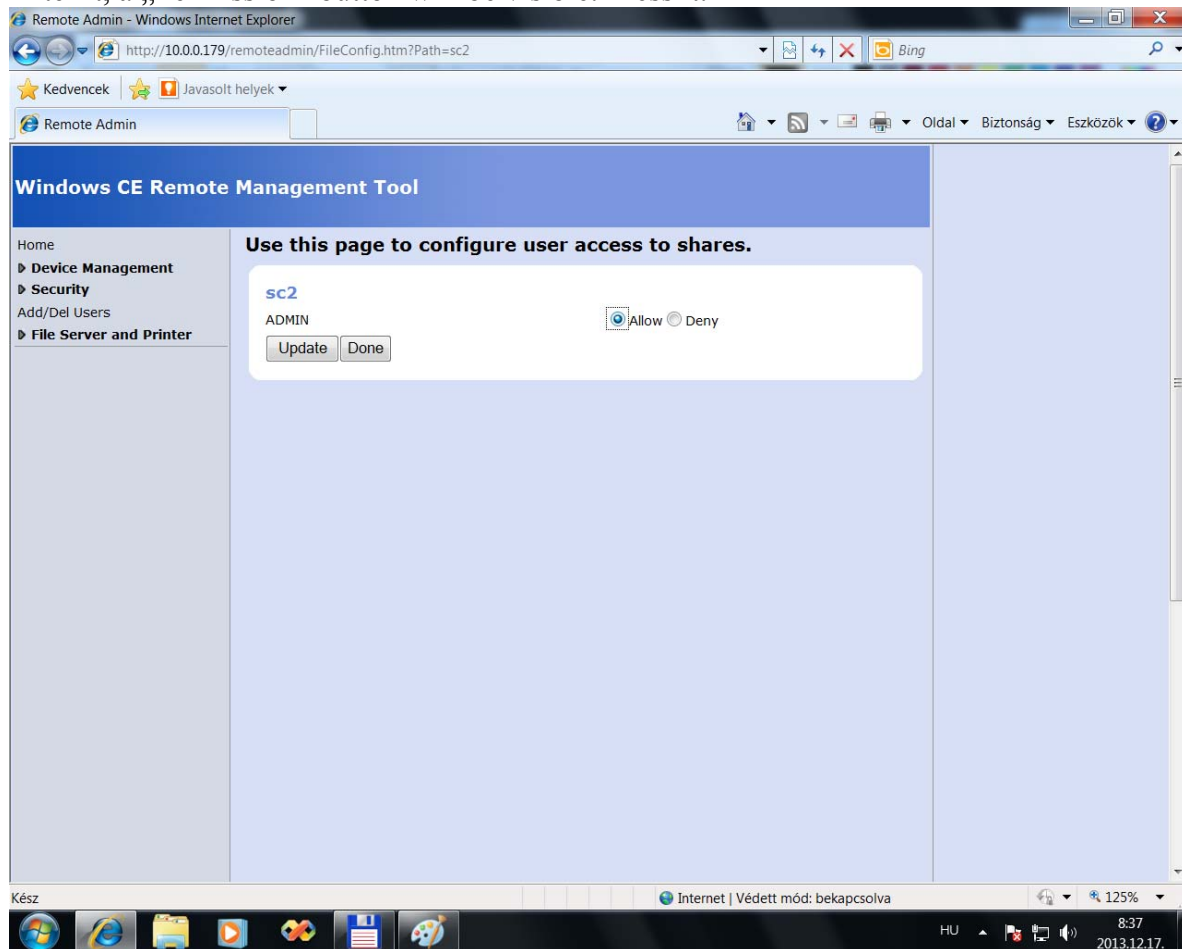


Then you need to set the directory name in the 'Add/Del Share' menu. You need to know that the \Storage card folder contains the control parameters and the program.

The \Storage Card2 is available for the users.

So write a directory name to here (for example: sc2) and press the „Add” button.

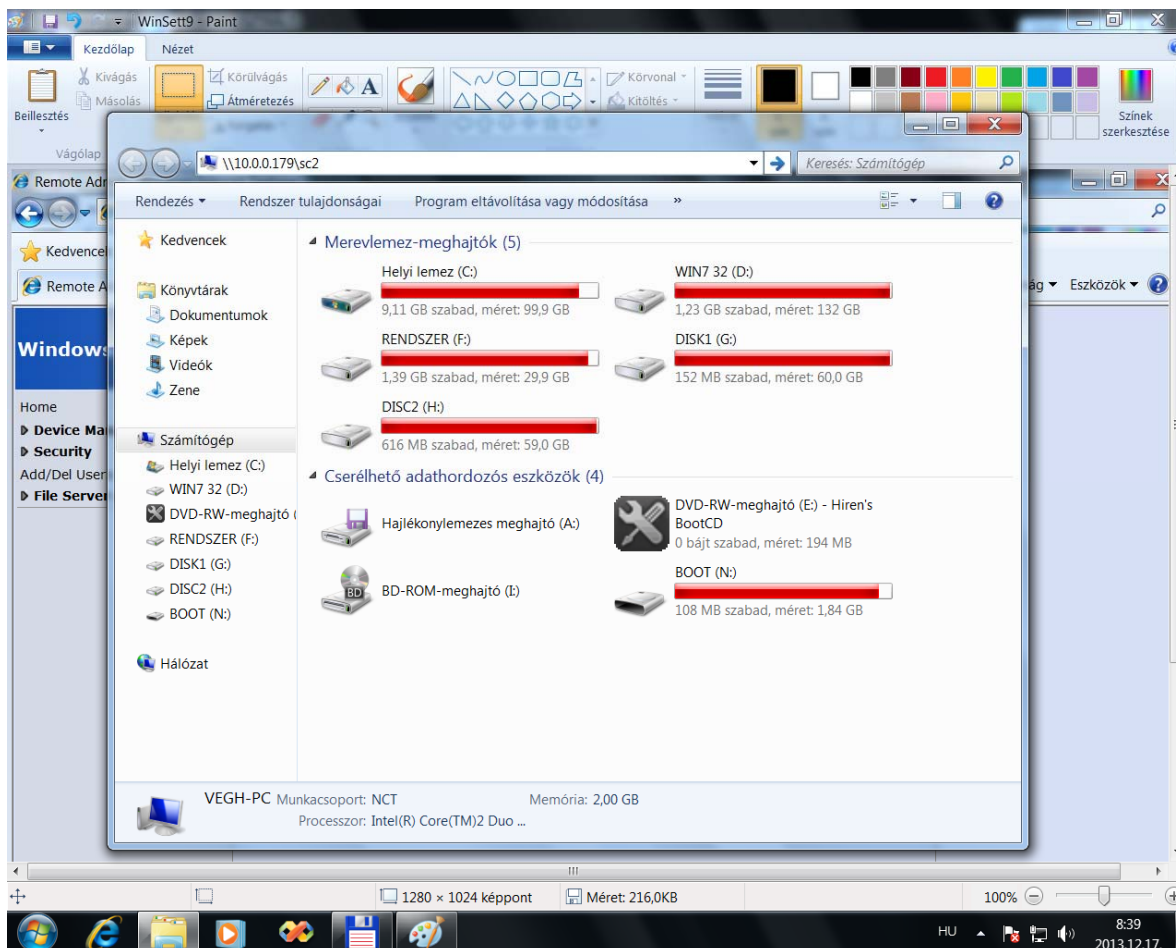
After it, a „Permission” button will be visible. Press it.



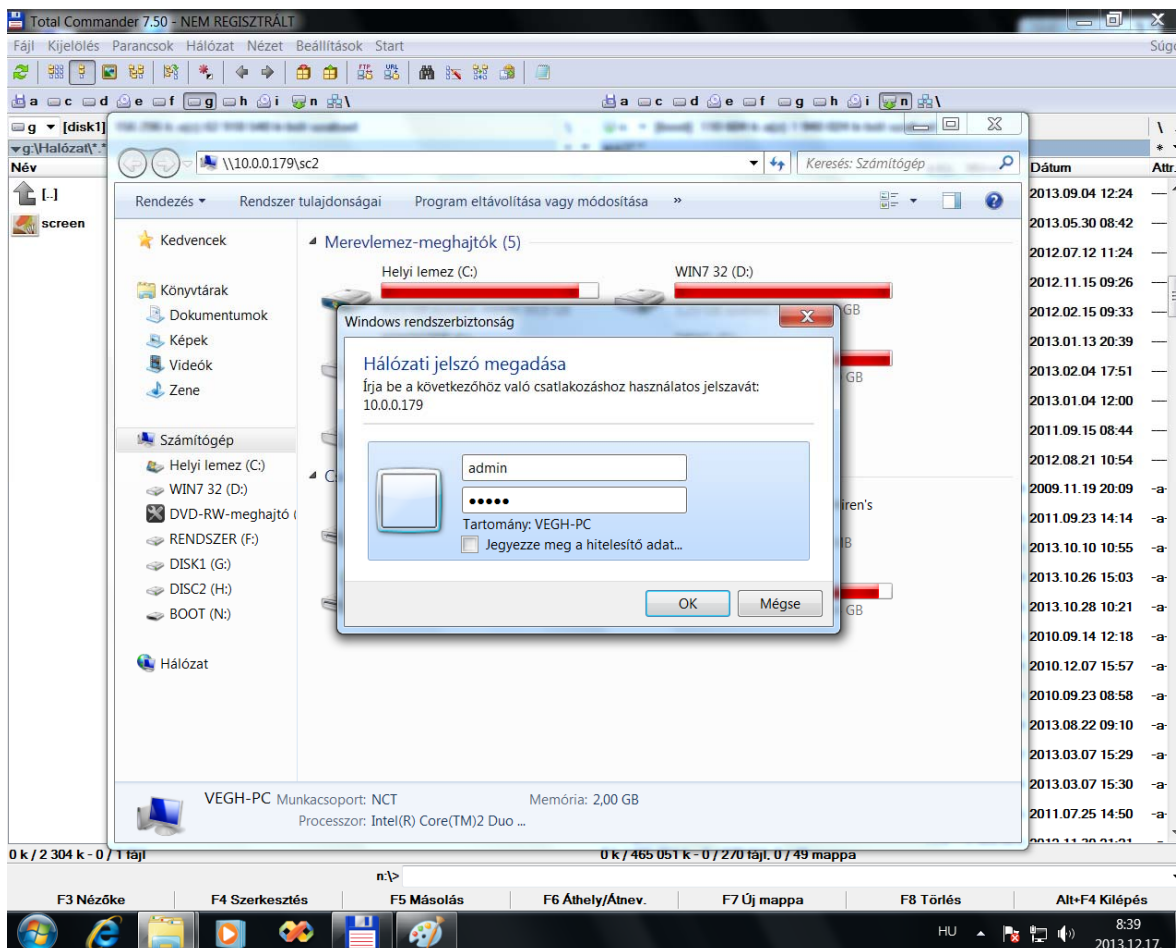
Under the given name (sc2) you see the username (Admin) and select the „Allow” radio button.

Press the „Update” then the „Done” button to finish.

Now you can close your browser.



Now you can open the „My Device” window in your PC and write in the address bar the full path (10.0.0.179sc2).



The Windows will ask you username and password. (You can save this setting, and it will not ask anymore) After it will shows the folder content.

